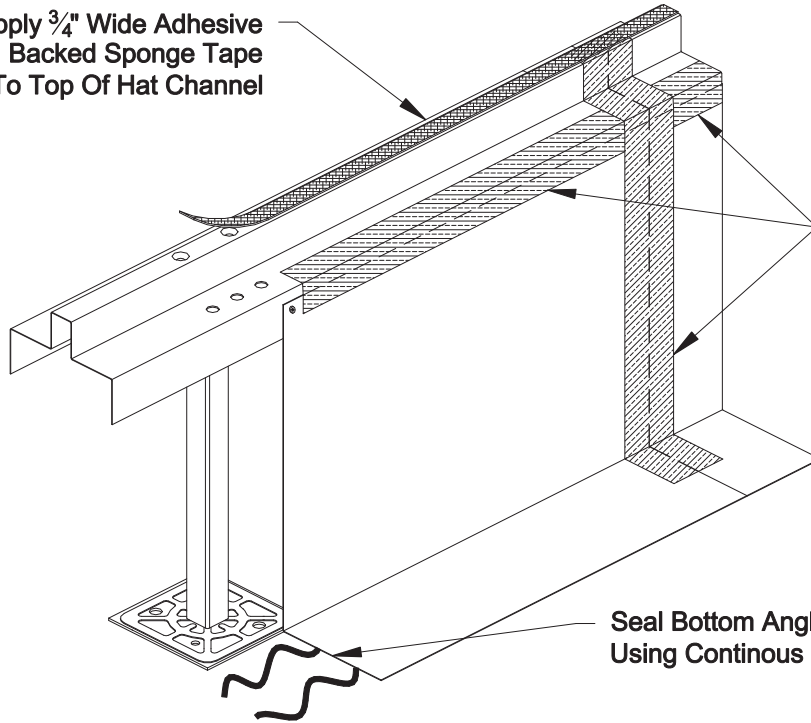


Apply 3/4" Wide Adhesive Backed Sponge Tape To Top Of Hat Channel



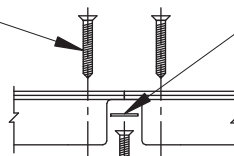
Tape All Joints And Seams With Metal Foil Duct Tape

Seal Bottom Angle To Slab Using Continous Bead Of Caulk

Corner-Lock Fasteners Where Applicable

Field Applied Gasket

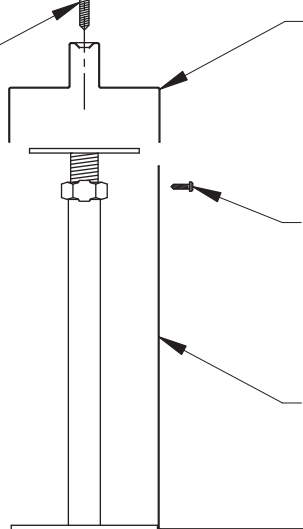
Attach Hat Channel To Pedestal Head With 1/4-20 Flat Head Screws



Hat Channel
0.024" (0.6 mm) Thick
Hot Dip Galv. Steel

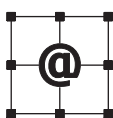
Fasten Hat Channel To
Bottom Angle Using
Tek Screws Or Pop-Rivets

Bottom Angle
0.024" (0.6 mm) Thick
Hot Dip Galv. Steel



NOTE: Cut-Sheet drawing and specifications are subject to change without prior notice.

TYPICAL PLENUM DIVIDER DETAILS



ASM Modular System Inc.®

9500 Industrial Center Dr.
Ladson, SC, 29456

Tel: 843-534-1110
Fax: 843-534-1111

www.asmproducts.com

Rev. 6/08

CS - 6610